

# Product Information Sheet

## VENT Apron Vent – AB20



The VENT AB20 is a Polypropylene Ventilated Apron Batten which enables warm air to escape from the lower roof void (fig A) or as a barge vent for Skillion Mono Pitch Roof types (Fig B). The AB20 has an adhesive and flexible aluminium flashing which is designed to form to most cladding profiles and prevent water ingress on any pitch roof. The AB20 has been designed with the recommended 4mm vents which will repel the ingress of nesting insects which can be a common occurrence in cavities.

The **AB20** is designed to be compatible with roof cladding profiles with a trough depth of <38mm.

Fig A: Skillion Roof Abutment Application

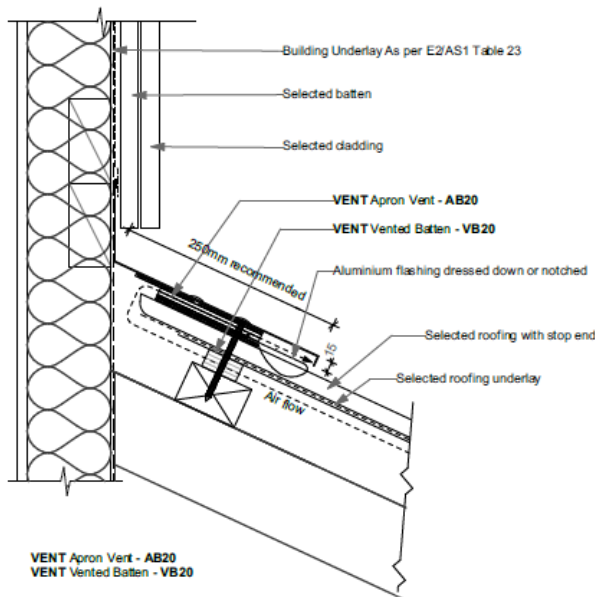
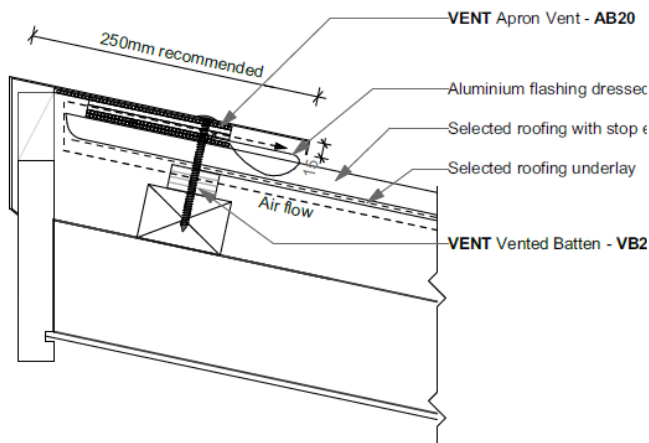


Fig B: Skillion Roof Barge Application

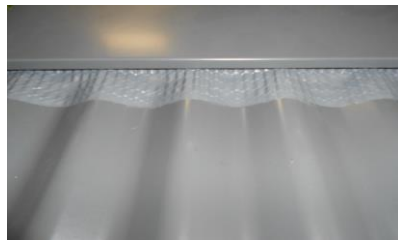


VENT Apron Vent - AB20  
VENT Vented Batten - VB20

**PROFILED STEEL ROOF CLADDING** *Ventilated Barge Detail*

## Installation:

- 1) The AB20 is placed over the top of the roof cladding.
- 2) The protective paper is then removed from the underside of the flashing tape which is then moulded to the shape of the roof cladding.
- 3) Remove all moisture and dust from the roof cladding before dressing down the aluminium soft edge.
- 4) The aluminium soft edge can be notched as required to suit the corrugate profile.
- 5) Care should be taken when dressing down the aluminium soft edge. Between 17mm and 25mm contact with the trough is required, depending on the cladding profile.
- 6) Minimum working Temperature to dress down the soft edge flashing is +5°
- 7) The aluminium soft edge can be notched or snipped as required to suit the metal roofing profile.
- 8) Soft edge flashing temperature resistance: -40° to +90°
- 9) The Apron or Barge flashing sits over the top of the AB20 and fixed as shown in Figs A & B.
- 10) Flashings can exceed 200mm minimum requirement in order to conceal soft edge of Apron Vent.
- 11) For technical assistance contact the VENT technical team



## Benefits:

- Free Airflow of 8,000mm<sup>2</sup> per linear metre
- Releases hot air from roof voids and eliminates condensation
- For trough depths >38mm use an AB20DT (Deep Trough)
- New Build or Renovation
- Easy to install – Manufactured in 1200mm lengths for easy handling
- Not visible when covered with flashing (*Flashing not included*)
- Additional fixing screw length is required to accommodate 20mm thickness of the AB20
- Insect proof – Recommended 4mm vents to prevent ingress of nesting insects
- Manufactured in recycled plastic for affordability
- 30 year warranty

## Dimensions:

